

urbansplash

# 3Towers Manchester



**Apartments  
for sale or to rent**

3Towers on the edge of Manchester city centre have been redesigned and reclassified into affordable homes.

The spacious apartments have floor to ceiling glazing, secure parking and private landscaped gardens.

**0333 666 9999**  
**live@urbansplash.co.uk**  
**[www.urbansplash.co.uk/residential/3towers](http://www.urbansplash.co.uk/residential/3towers)**



## 3Towers

Dalton Street  
Manchester  
M40 7EB

Working with architects Union North, Urban Splash have created 186 new homes out of three 1960's tower blocks, situated in the Irk Valley in East Manchester. The towers are named after the Pankhurst family, Emmeline, Christabel and Sylvia. One and two bed spacious apartments are available with floor to ceiling windows and great views overlooking Manchester city centre or the green and leafy Irk Valley.

### Location

The towers are in the fringe of the city. Just a ten minute walk from the Northern Quarter, and slap bang in the middle of the Irk Valley, a green and leafy space that no-one in Manchester knows about. Peace and quiet next to people and light.

» [Click here to see location map](#)



## Specification

### Finishes, fixtures and fittings

- Painted plastered stud walls
- Painted plasterboard ceilings throughout
- Doors with stainless steel ironmongery

### Flooring

- Engineered timber flooring to living room and kitchen areas
- Engineered timber or carpet flooring to bedroom areas
- Linoleum flooring to bathrooms

### Kitchens

- Range of fitted base and wall-mounted units
- Worktop with waterproof splash back
- Built in containers for recycling
- Stainless steel monoblock mixer taps
- Stainless steel sink
- Electric oven, ceramic hob and extractor
- Fridge with freezer compartment

### Bathrooms

- Modern white ceramic sanitary ware
- Chrome finish taps and fittings
- Large mirror incorporating concealed vanity unit
- Partially tiled walls
- Bath with shower over

### Services

- Telephone, TV and satellite points in living area and main bedroom
- Secure door entry system with video link to TV
- Intruder alarm
- Apartment-wide electric heating
- Centralised gas fired communal boiler plant providing hot water
- Dedicated space for washer/dryer

### Common areas

- Lift to all levels
- Recycling area on ground floor
- Secure parking for all apartments
- Bicycle storage

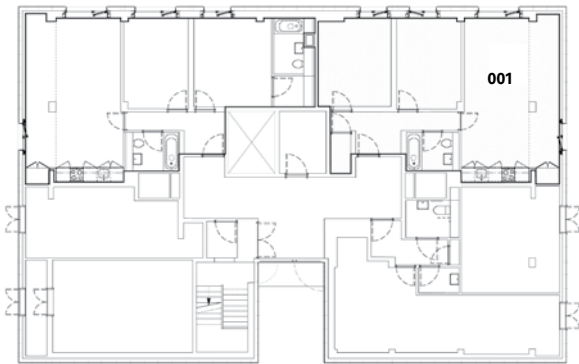


# Site plan

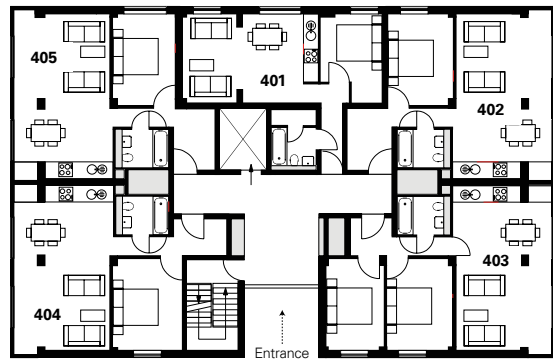


# Christabel Floor plans

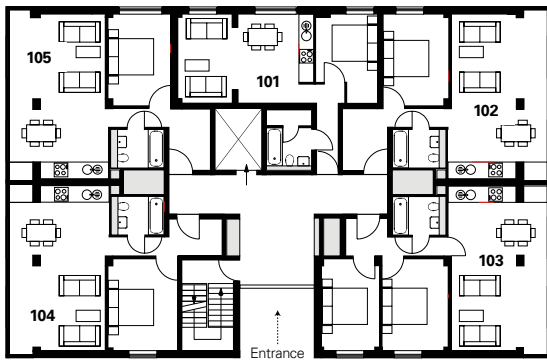
## Ground floor



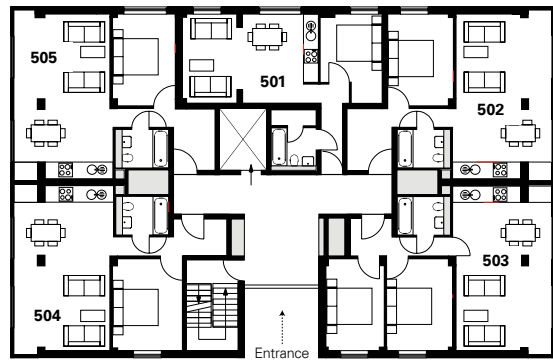
## Floor 4



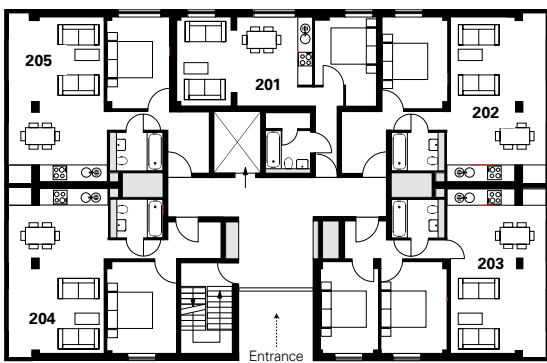
## Floor 1



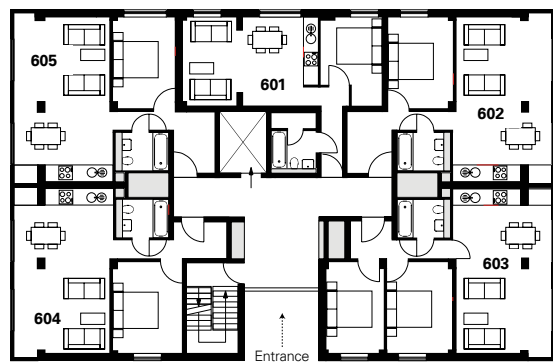
## Floor 5



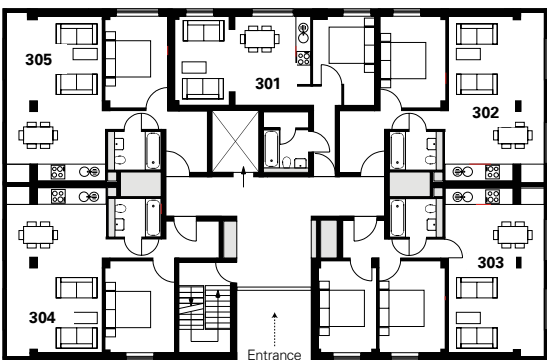
## Floor 2



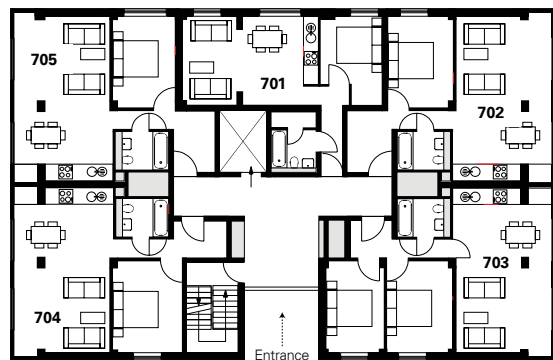
## Floor 6



## Floor 3



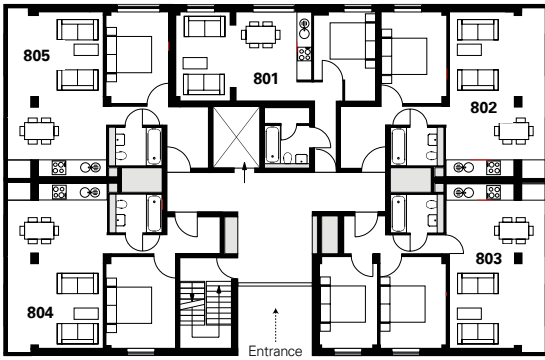
## Floor 7



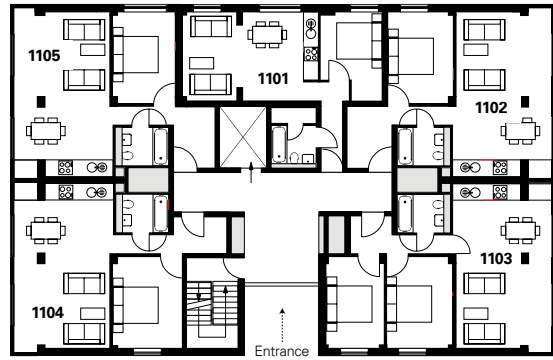
# Christabel

## Floor plans

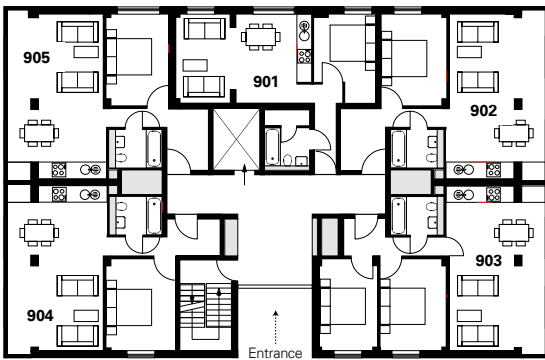
### Floor 8



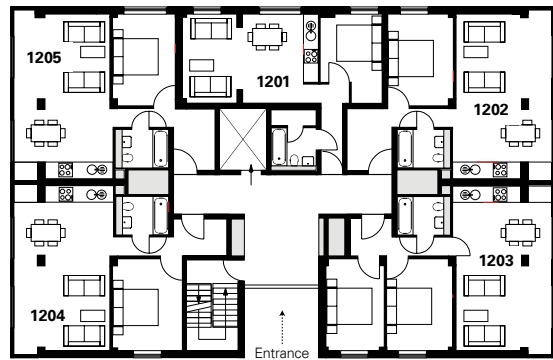
### Floor 11



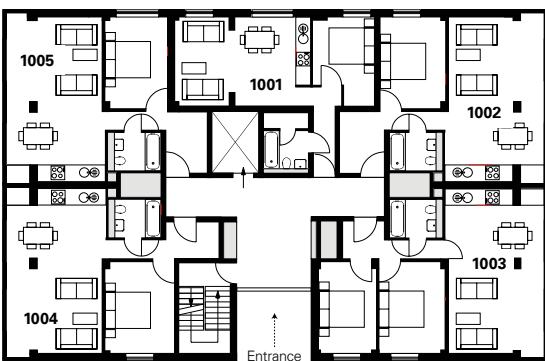
### Floor 9



### Floor 12



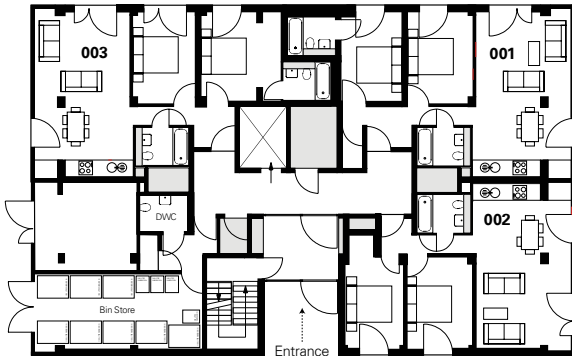
### Floor 10



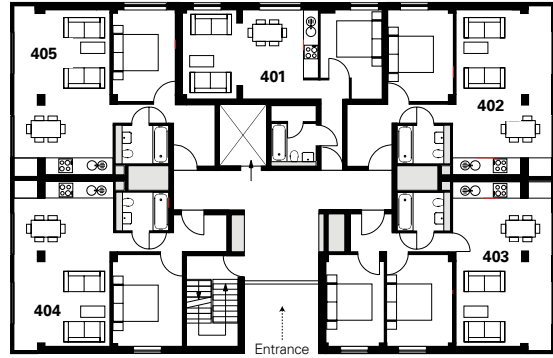
# Sylvia

## Floor plans

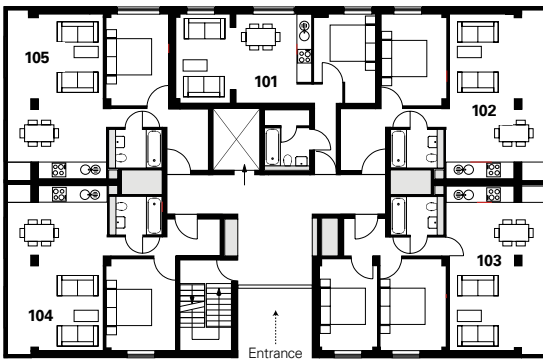
### Ground floor



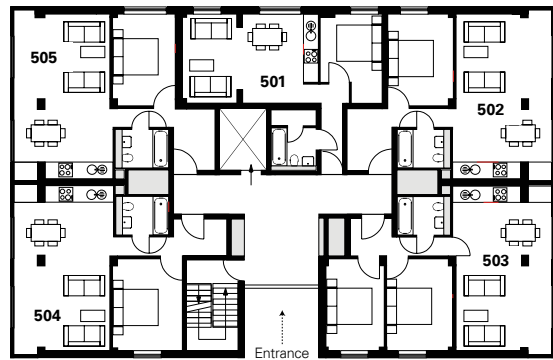
### Floor 4



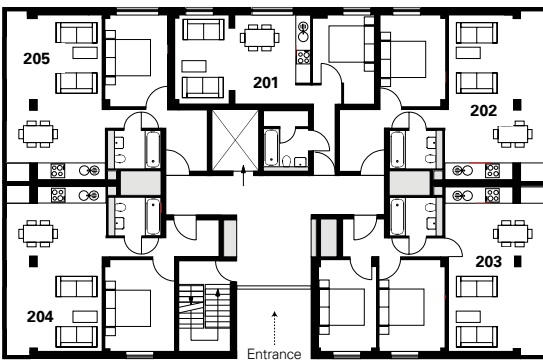
### Floor 1



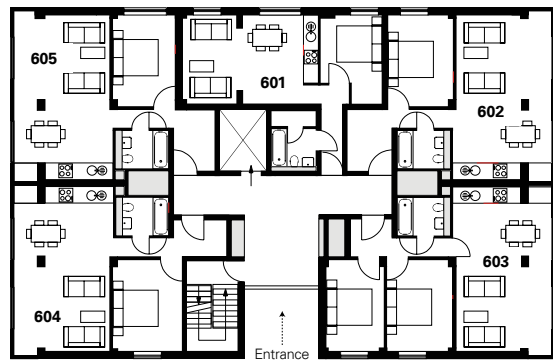
### Floor 5



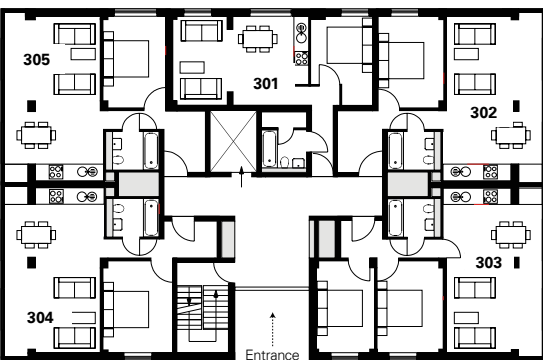
### Floor 2



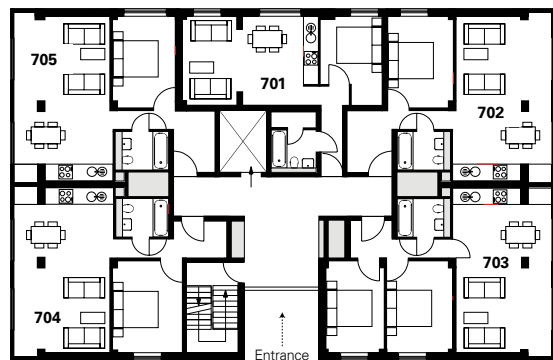
### Floor 6



### Floor 3



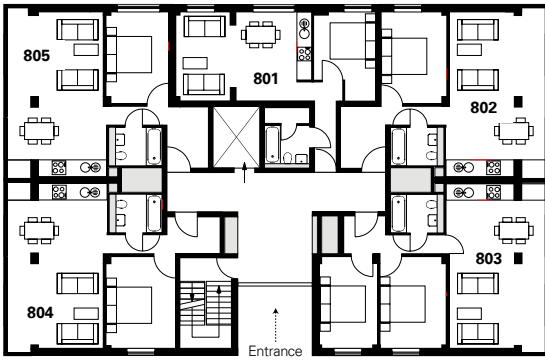
### Floor 7



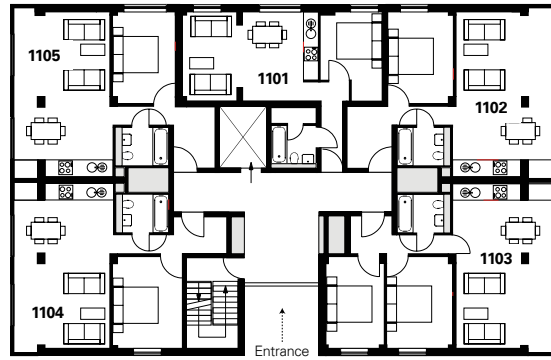
# Sylvia

## Floor plans

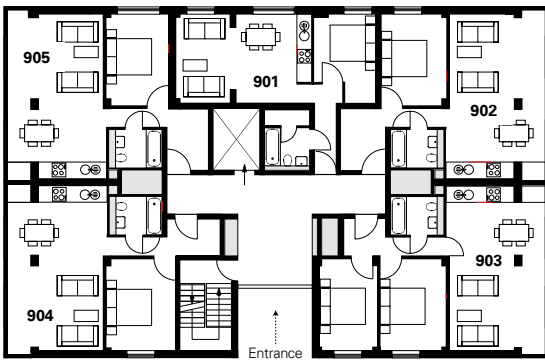
### Floor 8



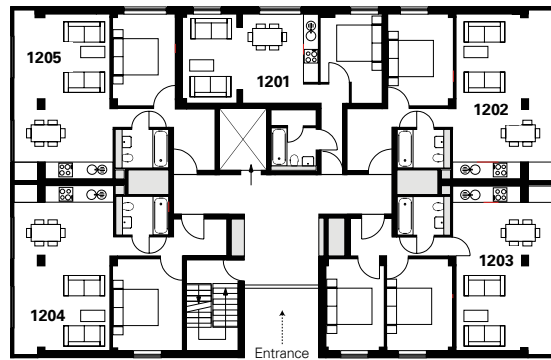
### Floor 11



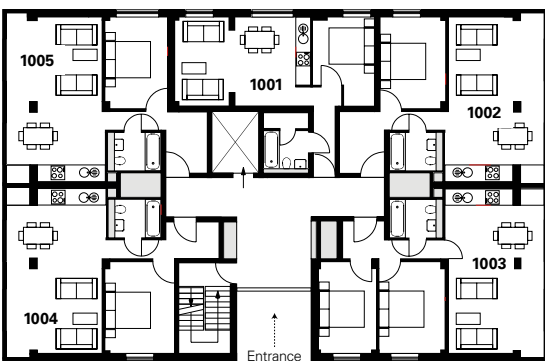
### Floor 9



### Floor 12



### Floor 10



DISCLAIMER: These particulars do not form any part of a contract. The information in these particulars was correct at the time of collation. Certain details are subject to change. Plans are not to scale. Images are representative of the space and may not be the actual unit. Please make sure you have the latest price list. For further details contact a member of the sales team.